



**Sheffield
Hallam
University**

Centre for Health
and Social Care
Research

EXPERIENCES OF PEOPLE WITH DEMENTIA KEEPING WARM AT HOME DURING WINTER

FPRN Meeting
14th April 2016

Ben Thomas

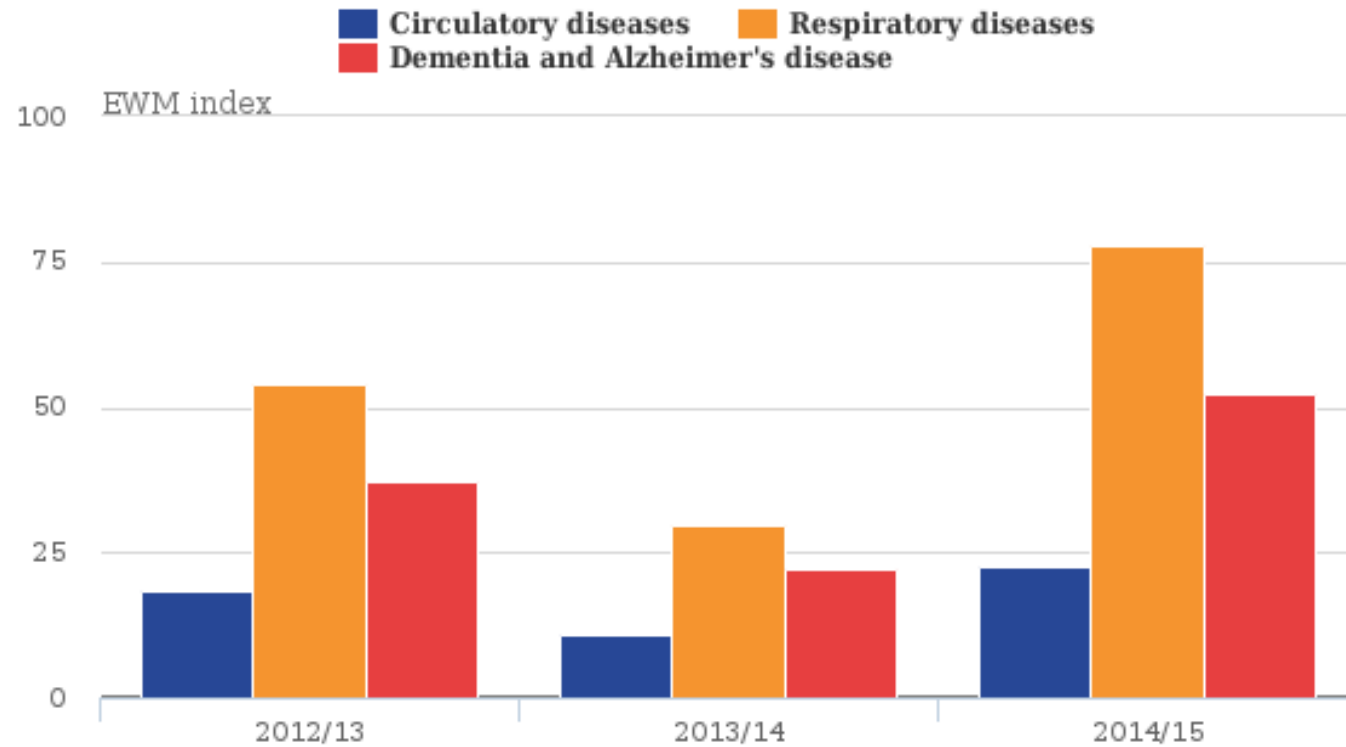
**Alzheimer's
Society** | Leading the
fight against
dementia

NHS
National Institute for
Health Research

CLAHRC
Yorkshire and Humber

 **Ulster
University**

EWD index England and Wales



ONS, 2015

Research Question

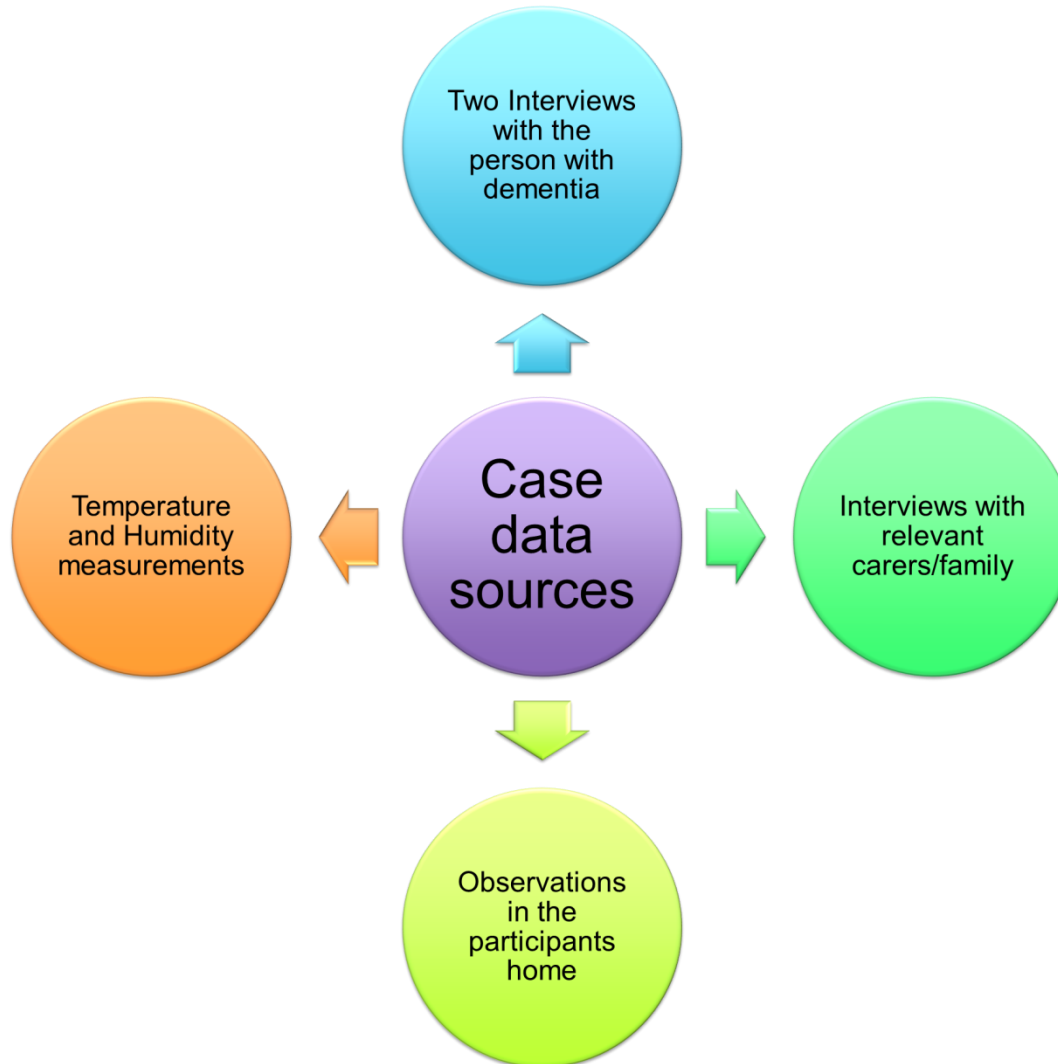
What are the experiences of
people with dementia
keeping warm at home
during winter?

Research Overview

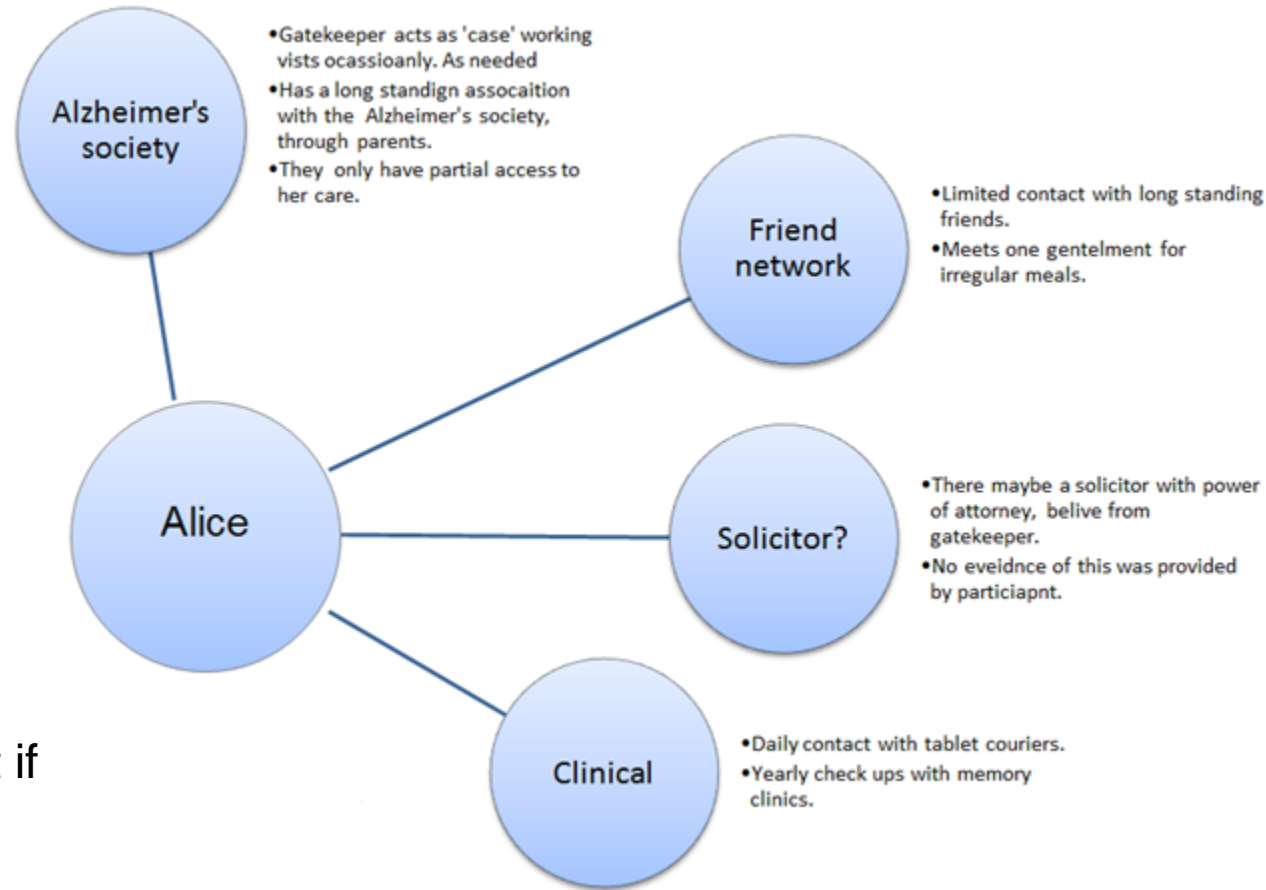
- A multiple case study design
- Qualitative research with a quantitative component
- Inductive, Constructivist enquiry



What was done?

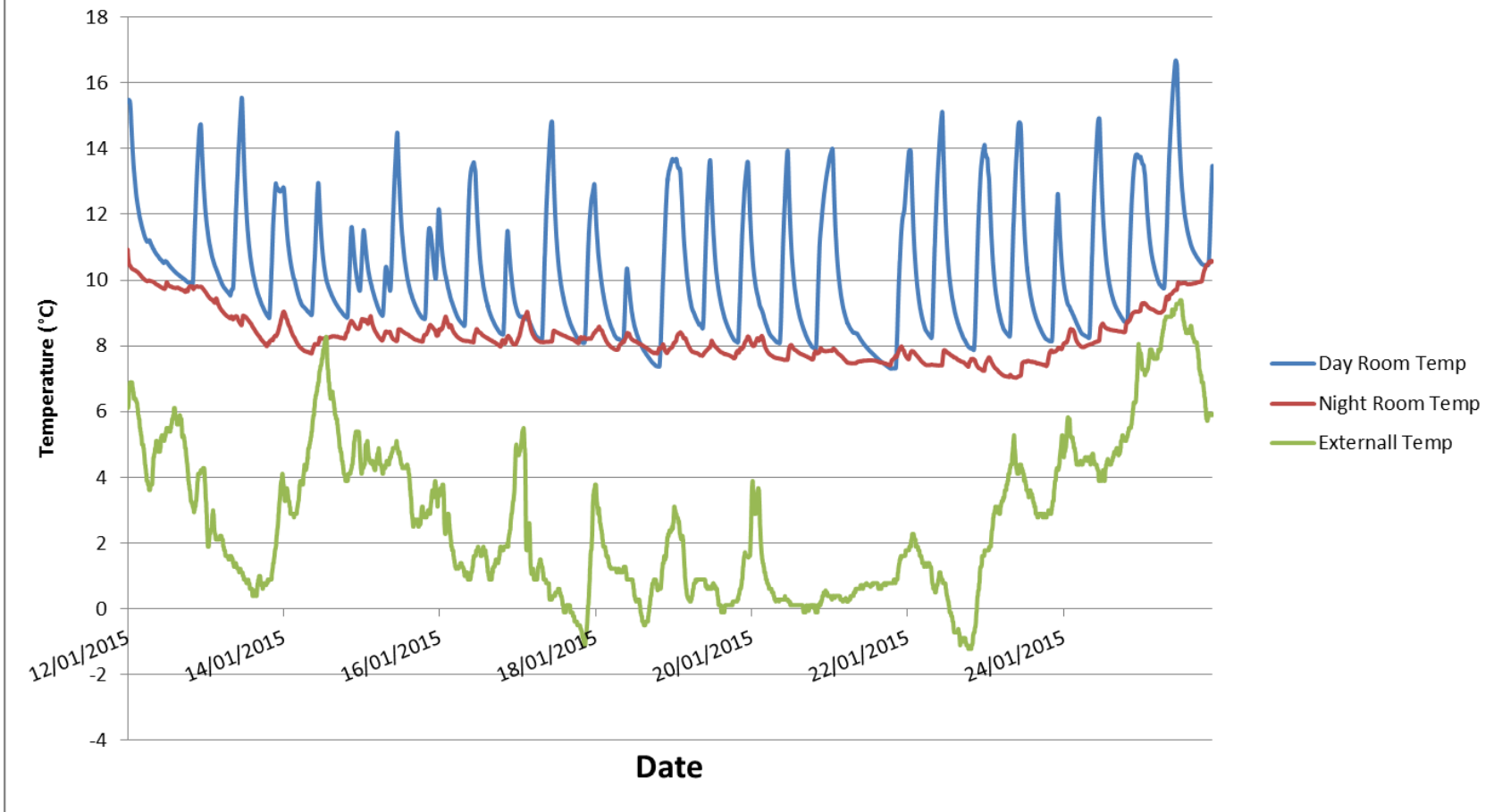


Care Network: Alice



"I had it sort of beaten into me when I was a child that if you put some, a couple of layers on inside, you didn't need the heating on."

Temperature internal & external - Alice



Experiences of PWD

- Competing priorities
- Independence vs isolation
- Family support
- Cultural outlook
- Structural factors
 - Condition of the home
 - Financial situation



Questions?

