

# Quaternary Entomology Directory

## Martin E. Adams

Paleoinsect Research  
 Email: paleoinsect@gmail.com  
 Website: paleoinsect.com



### Taxonomic groups

Coleoptera  
 Hemiptera (Cimicidae)  
 Orthoptera



### Geographical areas and periods

North America, primarily the Pacific Northwest  
 Late Pleistocene through Holocene  
 Pre- and Post-Contact  
 (through the 19<sup>th</sup> century)

### Themes and methods

Consumption of insects by prehistoric peoples  
 Human ectoparasites  
 Tracking introduced species to the New World  
 Reconstruction of past climates and environments



## Allison Bain

Professor, Université Laval  
 Email: Allison.Bain@hst.ulaval.ca



### Taxonomic groups

Coleoptera

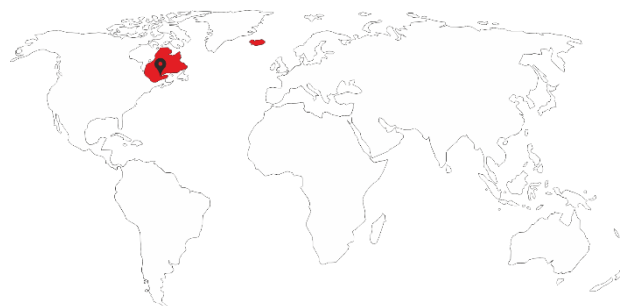


### Geographical areas and periods

Labrador and Québec, Canada  
 Iceland  
 1000-1900 AD

### Themes and methods

Daily life and environmental reconstructions on Inuit sites (Labrador)  
 Colonial environments and introduced species (Québec)  
 Farming economies (Iceland)



## Philip Buckland

Reader in Environmental Archaeology, Umeå University  
 Email: philip.buckland@umu.se  
 Websites: <http://bugscep.com>  
<http://sead.se>



### Taxonomic groups

Mainly Coleoptera



### Geographical areas and periods

Mainly Europe and the North Atlantic Islands  
 Mainly the Holocene

### Themes and methods

Environmental reconstructions  
 Climate reconstructions  
 Developing quantitative methods, databases and digital tools



## Dorothee Dubé

MA student, Université Laval  
 Email: dorothee.dube.1@ulaval.ca  
 Phone: 1 (581)-990-5888



### Taxonomic groups

Coleoptera



### Geographical areas and periods

Iceland  
 Medieval and postmedieval periods

### Themes and methods

Archaeoentomology  
 Archaeopedology



# Quaternary Entomology Directory

## Frédéric Dussault

PhD candidate, Memorial University of Newfoundland  
Email: Dussault.fred@gmail.com



### Taxonomic groups

Coleoptera

### Geographical areas and periods

Newfoundland  
Arctic and Subarctic regions  
Prehistoric and contact period

### Themes and methods

Hunter-gatherers' impact on the environment  
Activity areas and the use of space on archaeological sites



## Scott Elias

Professor of Quaternary Sciences Royal Holloway, University of London  
Email: s.elias@rhul.ac.uk



### Taxonomic groups

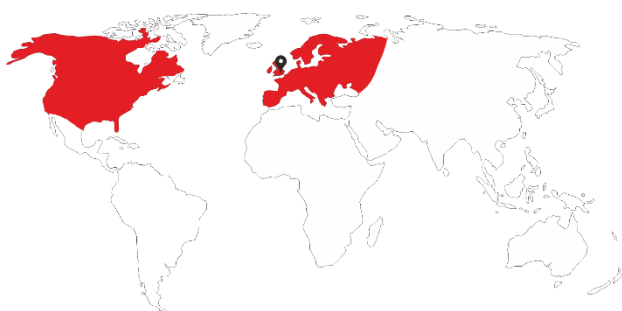
Mainly Coleoptera

### Geographical areas and periods

Late Pleistocene and Holocene  
Middle and High Latitudes of the Northern Hemisphere (Europe and North America)

### Themes and methods

Paleontological and archaeological sites  
Palaeoenvironmental and palaeoclimate reconstructions  
Zoogeography



## J. Mark Erickson

Emeritus Professor, St Lawrence University  
Email: meri@stlawu.edu

### Taxonomic groups

Fossil aquatic arthropods  
Oribatida

### Geographical areas and periods

Pleistocene  
Holocene

### Themes and methods

Palaeoacarology



## Véronique Forbes

Postdoctoral Fellow PACEA, Université de Bordeaux  
Email: veroforbes@gmail.com  
Phone: + 44 (0) 1224 273701



### Taxonomic groups

Coleoptera, Phthiraptera, Siphonaptera, Diptera

### Geographical areas and periods

Iceland  
Southwestern Alaska  
900 AD to the present

### Themes and methods

Activity areas and the use of space on archaeological sites  
Human impacts on the environment  
Archaeoentomological approaches to the study of past conflict  
Biogeography



# Quaternary Entomology Directory

## W. Eugene Hall

Manager, University of Arizona  
Insect Collection and Insect  
Diagnostics Lab  
Email: wehall@email.arizona.edu  
Phone: 1 (520)-621-6446



### Taxonomic groups

Coleoptera

### Geographical areas and periods

Sonoran Desert (fossil packrat middens)  
Worldwide (systematics)

### Themes and methods

Systematics, taxonomy and biogeography of  
Coleoptera  
Reconstructing past climates of the Sonoran  
Desert and southwestern United States using  
fossil insects from packrat middens



## Geoff Hill

Consultant, University of  
Birmingham  
Email: geoffreyedhill@gmail.com



### Taxonomic groups

Coleoptera

### Geographical areas and periods

Northwestern Europe (United Kingdom  
and Ireland)  
Holocene

### Themes and methods

Quantitative land cover and land cover  
change  
Analytical and statistical methodology  
Prehistoric archaeoentomology



## Lynda Howard

Visiting Fellow, Loughborough  
University, Freelance  
palaeoentomologist  
Email: l.c.howard@lboro.ac.uk  
Lynda.howard2@btinternet.com  
Phone: + 44 (0) 1539 822797



### Taxonomic groups

Coleoptera, Trichoptera and Chironomidae

### Geographical areas and periods

United Kingdom  
Europe (Chironomidae)  
Late Devensian/Holocene  
Roman period

### Themes and methods

Palaeochannels, wetlands and lake sediments  
Archaeoentomology on Roman archaeological  
sites



## Jean-Bernard Huchet

CNRS, Muséum national  
d'Histoire naturelle, Paris &  
Université de Bordeaux  
Email: huchet@mnhn.fr  
jean-bernard.huchet@u-bordeaux1.fr  
Phone: 33(01) 40 79 32 74  
33(05) 40 00 28 46



### Taxonomic groups

Coleoptera, Diptera (puparia) of forensic  
interest, ectoparasites

### Geographical areas and periods

Palaeartic, neotropical and Ethiopian regions  
All periods

### Themes and methods

Funerary archaeoentomology (insects and  
parasites associated with human and animal  
remains using a forensic approach)  
Ichnoarchaeology (traces left by insects on  
bones from archaeological contexts)



# Quaternary Entomology Directory

## Hrönn Konráðsdóttir

Researcher, Institute of  
Archaeology of Iceland  
Email: Hronn.Konn@gmail.com



### *Taxonomic groups*

Coleoptera, Phthiraptera

### *Geographical areas and periods*

Iceland  
Viking Age up to the Early Modern Period

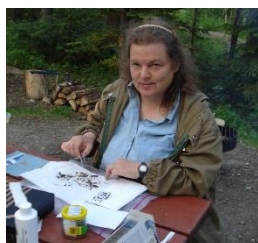
### *Themes and methods*

Activities and the use of space in archaeological contexts  
Reconstructing environments  
Impacts of the Little Ice Age



## Svetlana Kuzmina

Freelance palaeoentomologist  
(previously University of Alberta)  
Email: kuzmina@ualberta.ca



### *Taxonomic groups*

Mostly Coleoptera

### *Geographical areas and periods*

Beringia (northeastern Siberia, Alaska, Yukon)  
Quaternary and Late Neogene

### *Themes and methods*

Permafrost samples  
Ecological groupings  
Environmental reconstructions



## Olivier Lalonde

MA student, Université Laval  
Email: olivier.lalonde.2@ulaval.ca



### *Taxonomic groups*

Coleoptera

### *Geographical areas and periods*

Labrador, Quebec, Greenland  
Late Holocene (North American prehistoric and historic periods)

### *Themes and methods*

Archaeoentomology



## Andrei A. Legalov

Head of Laboratory of Phylogeny  
and Faunogenesis, Institute of  
Systematics and Ecology of  
Animals, SB RAS  
Email: fossilweevils@gmail.com



### *Taxonomic groups*

Coleoptera, Curculionoidea

### *Geographical areas and periods*

Prehistoric Eurasia

### *Themes and methods*

Reconstruction of subfossil faunas  
Ecological groupings  
Environmental reconstructions



# Quaternary Entomology Directory

## Maureen Marra

Programme Manager  
University of Waikato  
Email: mmarra@waikato.ac.nz



### Taxonomic groups

Coleoptera

### Geographical areas and periods

New Zealand  
Pacific Islands  
Holocene

### Themes and methods

Pre-settlement ecology  
Biogeography  
Climate change



## Eva Panagiotakopulu

Senior Lecturer  
University of Edinburgh

### Taxonomic groups

Coleoptera  
Diptera  
Ectoparasites

### Geographical areas and periods

North Atlantic  
Northern Scandinavia  
British Isles  
Eastern Mediterranean



## Jesper Petersen

PhD candidate  
Natural History Museum of  
Denmark (Centre for Geogenetics)  
Email: jesperpetersen@snm.ku.dk



### Taxonomic groups

Chironomidae  
Trichoptera  
Coleoptera  
Hemiptera (Psyllidae)

### Geographical areas and periods

Denmark, Greenland and Iceland  
Mainly Holocene

### Themes and methods

Archaeoentomology, Paleoentomology and  
Paleolimnology  
Analysis of insects from Bronze Age Oak  
coffin burials



## Philippe Ponel

CNRS, Aix-Marseille University  
Email: philippe.ponel@imbe.fr



### Taxonomic groups

Coleoptera

### Geographical areas and periods

Europe, North Africa, Middle East  
Pleistocene, Holocene

### Themes and methods

Palaeoenvironment and climate change  
Changes in alpine insect communities in  
connection with human impacts  
Fluctuation of the tree line  
Archaeoentomology, anthropized  
ecosystems, synanthropic insects  
Calibration of fossil data from the study of  
modern analogues (biodiversity, ecology and  
functioning of present insect communities)



# Quaternary Entomology Directory

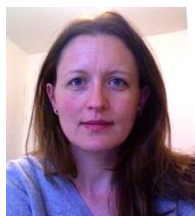
## Eileen Reilly

Freelance palaeoentomologist

Email: [eireilly@tcd.ie](mailto:eireilly@tcd.ie)

[eileen.reilly@ucd.ie](mailto:eileen.reilly@ucd.ie)

Phone: +353 (0) 86-2235527



### Taxonomic groups

Coleoptera primarily, also interested in Phthiraptera, Siphonaptera, Diptera, Hymenoptera

### Geographical areas and periods

Prehistoric and historic Ireland, Britain and northwestern Europe  
Early Medieval settlement history (Ireland to Russia)

### Themes and methods

Living conditions and use of space in settlements  
Changes in wetland and woodland habitats

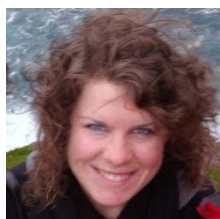


## Mélanie Rousseau

PhD candidate, Université Laval

Email:

[melanie.rousseau.4@gmail.com](mailto:melanie.rousseau.4@gmail.com)



### Taxonomic groups

Coleoptera

### Geographical areas and periods

Eastern North America  
All periods



## Francis Rowney

PhD Candidate  
Plymouth University

Email:

[francis.rowney@plymouth.ac.uk](mailto:francis.rowney@plymouth.ac.uk)



### Taxonomic groups

Coleoptera

### Geographical areas and periods

Middle Pleistocene Britain

### Themes and methods

Ecology and climate of Middle Pleistocene interglacials  
Use of Coleoptera in a multi-proxy context



## Nick B. Schafstall

PhD Candidate, Czech  
University of Life Sciences

Email: [schafstall@fld.czu.cz](mailto:schafstall@fld.czu.cz)

Phone: +420 22438 2824



### Taxonomic groups

Coleoptera  
Trichoptera

### Geographical areas and periods

Central Europe  
Holocene

### Themes and methods

Lake Sediments  
Peat bogs



# Quaternary Entomology Directory

## Shigehiko Shiyake

Curator, Osaka Museum of Natural History

Email: shiyake@mus-nh.city.osaka.jp  
Phone: +81-6-6697-6221 (office: In Japanese only)



### Taxonomic groups

Coleoptera



### Geographical areas and periods

Japan  
Late Pleistocene to 16<sup>th</sup> century AD

### Themes and methods

Climate, vegetation and environmental reconstructions based on beetle assemblages



## David Smith

Senior Lecturer in Environmental Archaeology, University of Birmingham

Email: d.n.smith@bham.ac.uk  
Phone: +44 (0) 121 414 6542 (Mon, Wen, Fri)  
0121 415 1104 (Tues and Thur)

### Taxonomic groups

Coleoptera, Phthiraptera, Siphonaptera, Diptera



### Geographical areas and periods

United Kingdom  
Roman, Medieval and Postmedieval periods

### Themes and methods

Early human settlement and housing  
Development of urban landscapes  
Importation of pest species  
Reconstruction of Holocene landscapes



## Alice M. Telka

Paleotec Services, Ottawa (formerly Geological Survey of Canada)

Email: atelka@sympatico.ca  
Phone: 1- 613-230-5919



### Taxonomic groups

Coleoptera



### Geographical areas and periods

Canada  
Quaternary and Late Neogene

### Themes and methods

Macrofossil analyses (plants and insects)  
Palaeoenvironmental reconstructions



## Nicki Whitehouse

Associate Professor (Reader) in Physical Geography  
University of Plymouth

Email: Nicola.whitehouse@plymouth.ac.uk



### Taxonomic groups

Coleoptera  
Limited experience Chironomidae



### Geographical areas and periods

Britain, Ireland, New Zealand  
Late Glacial, Holocene, Pleistocene  
Prehistory (Mesolithic, Neolithic, Bronze Age)

### Themes and methods

Climate change, human impacts, ecosystem processes, landscape structure, biodiversity, herbivory, extinctions, species distribution models, biogeography, speciation and evolution, Bayesian chronology, 'big data', inter- and multidisciplinary approaches



# Quaternary Entomology Directory

## Jean-Hervé Yvinec

Research engineer, INRAP,  
Laboratoire d'archéozoologie de  
Compiègne

Email: jean-herve.yvinec@inrap.fr



### *Taxonomic groups*

---

Coleoptera

### *Geographical areas and periods*

---

France

Holocene

### *Themes and methods*

---

Archaeoentomology  
(<5% of my professional activity)



## Evgeniy Zinovyev

Senior Assistant researcher  
Institute of Ecology of Plants  
and Animals, Ural Branch of  
Russian Academy of Sciences

Email: zin62@mail.ru

Phone: +7 (950) 657-08-61



### *Taxonomic groups*

---

Coleoptera, Hymenoptera

### *Geographical areas and periods*

---

Russian Federation, the Urals

Western & northeastern Siberia

Pleistocene (mainly Late) and Holocene

### *Themes and methods*

---

Palaeoenvironments and climate change  
Regional features in insect communities,  
comparison of West and East Siberian subfossil  
insect faunas, reconstruction of the latitudinal  
zonality in the Middle Pleniglacial, changes in  
insect faunas during the Pleistocene –  
Holocene transition, analysis of modern insect  
faunas and their comparison with subfossil  
insect faunas

